

8SMC5-USB compatibility with OWIS motorized stages:

Motorized stages based on DC motors:

MTM 60-XX-XiDS (a), MTM 120-XX-XiDS (a), LPTM 30-XXX-XiDS (a), LTM 45-XXX-XiDS (a), LTM 45M-XX-XiDS (a), LTM 60-XXX-XiDS (c/a), LTM 60P-XXX-XiDS (c/a), LTM 60F-XXX-XiDS (c/a), LTM 60M-XXX-XiDS (c/a), LTM 80-XXX-XiDS (c/a), LTM 80P X-XXX-XiDS (c/a), LTM 80F-XXX-XiDS (c/a), LTM 80M-XXX-XiDS (c/a), LTM 120-XXX-XiDS (c/a), LTM 120F-XXX-XiDS (c/a), LTM 120M-XXX-XiDS (c/a), LIMES 44-XX-XiDS (a), LIMES 60-XXX-XiDS (c/a), LIMES 64-XXX-XiDS (c/a), LIMES 84N-XXX-XiDS (c/a), LIMES 124N-XXX-XiDS (c/a), LIMES 84N-XXX-XiDS-IMS (c/a), LIMES 124N-XXX-XiDS-IMS (c/a), KTM 65B-D35-HiDS (a), PKTM XX-XiDS (c/a), PKTM XXX-XiDS (c/a), CROSS XX-XiDS (c/a), CROSS XXX-XiDS (c/a), HVM 60-12-HiDS (c/a), HVM 100N-30-XiDS (c/a), HTM 60-12-XiDS (c/a), HTM 100-30-XiDS (c/a), HTM 150-30-XiDS (c/a), HUMES 60-12-XiDS (c/a), HUMES 100-30-XiDS (c/a), HUMES 150-30-XiDS (c/a), HUMES 200-30-XiDS (c/a), MOGO 65-40-65-XiDS (c/a), MOGO 150-20-XXX-XiDS (c/a), TPM 150-20-20-243-HiDS (c/a), MMS 19-XX-XiDS (a).

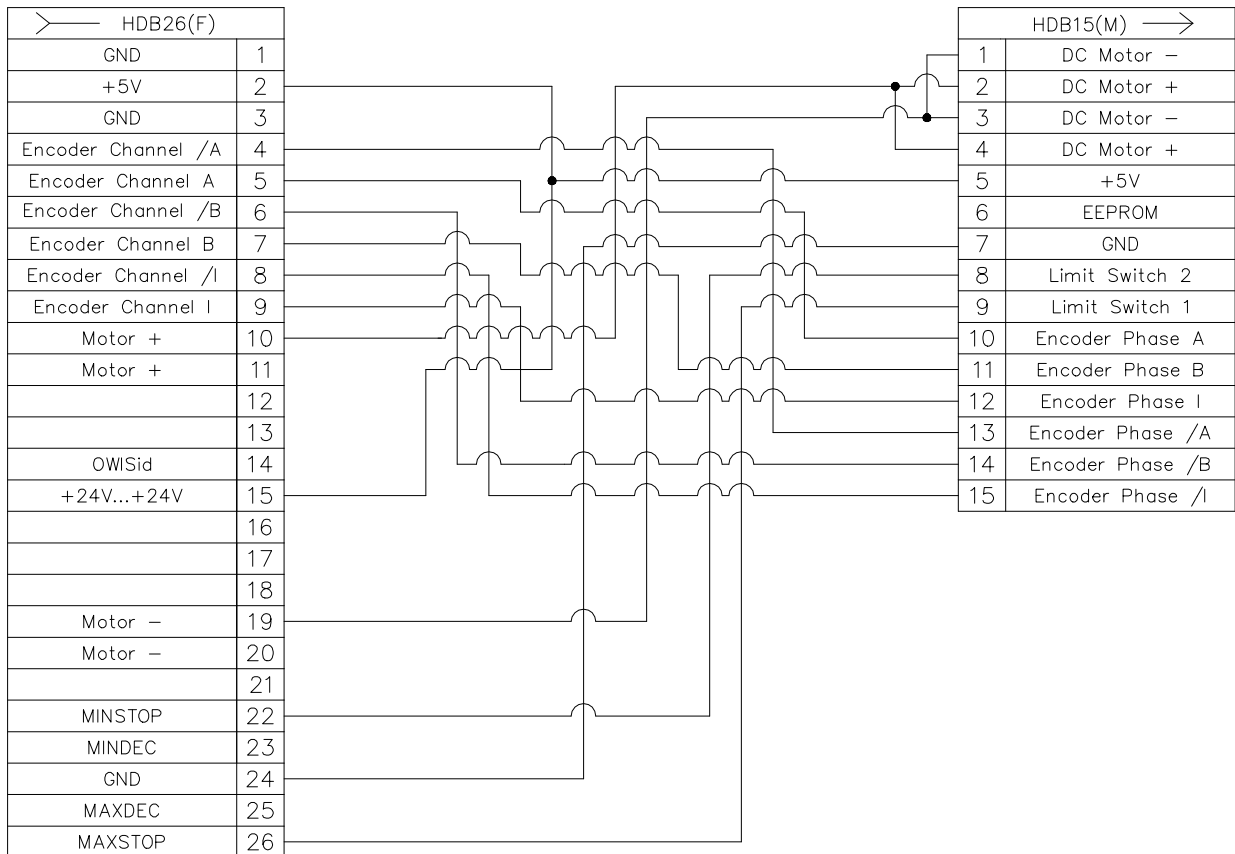


Figure 1. Cable/adapter for OWIS DC motorized stages

KTM 40B-D15-iDS (a), DRTM 40-D25-HiDS (c/a), DRTM 65-XXX-HiDS (c/a), DRTM 90-D53-HiDS (c/a),
DMT 40-D20-HiDS (a), DMT 65-DXX-HiDS (c/a), DMT 100-D53-HiDS (c/a), DMT 130N-D56-HiDS (c/a).

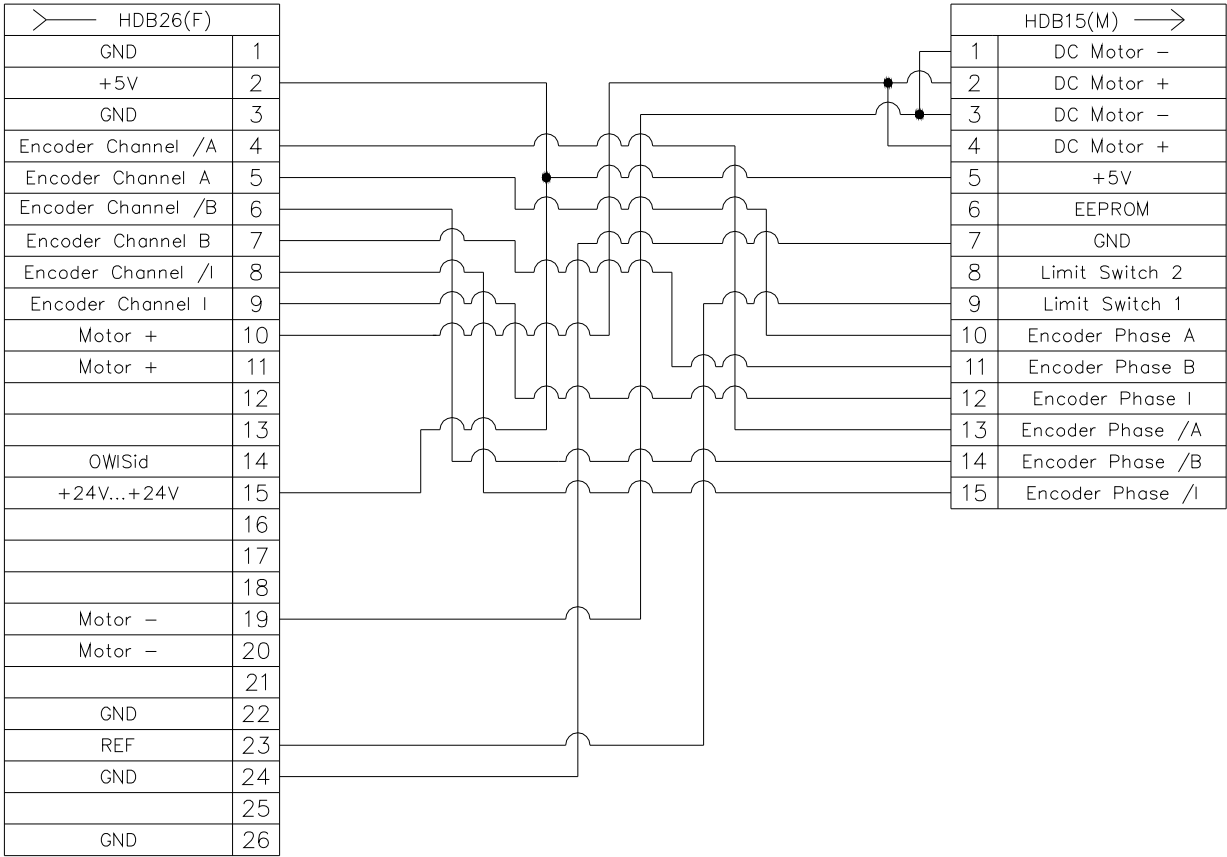


Figure 2.Cable/adapter for OWIS DC motorized stages

HUMES 150-30-XiDS-IMS (c), HUMES 60-12-XiDS-IMS (c).

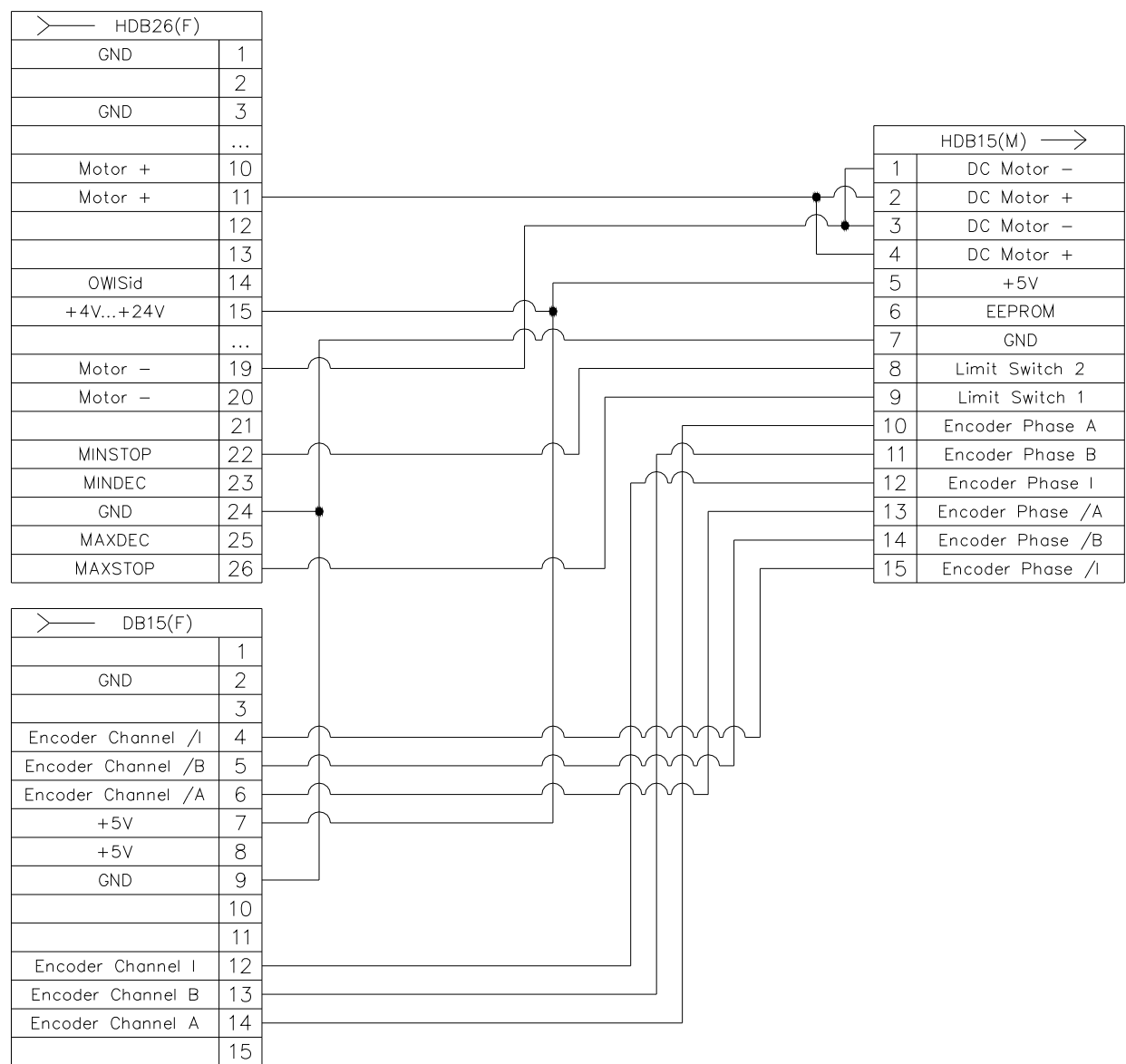


Figure 3. Cable for OWIS DC motorized stages

Motorized stages based on Stepper motors:

MTM 60-XX-XiSM (a), MTM 120-XX-XiSM (a), LPTM 30-XXX-XiSM (a), LTM 45-XXX-XiSM (a), LTM 45M-XX-XiSM (a), LTM 60-XXX-XSM (c/a), LTM 60P-XXX-XSM (c/a), LTM 60F-XXX-XSM (c/a), LTM 60M-XXX-XSM (c/a), LTM 80-XXX-XSM (c/a), LTM 80P X-XXX-XSM (c/a), LTM 80F-XXX-XSM (c/a), LTM 80M-XXX-XSM (c/a), LTM 120-XXX-XSM (c/a), LTM 120F-XXX-XSM (c/a), LTM 120M-XXX-XSM (c/a), LIMES 44-XX-XiSM (a), LIMES 60-XXX-XSM (c/a), LIMES 64-XXX-XSM (c/a), LIMES 150-X00-HSM (c/a), LIMES 170-XXX-HSM (c/a), KTM 65B-D35-HiSM (a), PKTM XX-HSM (c/a), PKTM XXX-XSM (c/a), CROSS XX-HSM (c/a), CROSS XXX-XSM (c/a), HVM 60-12-HSM (c/a), HTM 60-12-XiSM (c/a), HTM XXX-30-XiSM (c/a), HUMES XX-12-XiSM (c/a), HUMES XXX-30-XiSM (c/a), MMS 19-XX-XiSM (a).

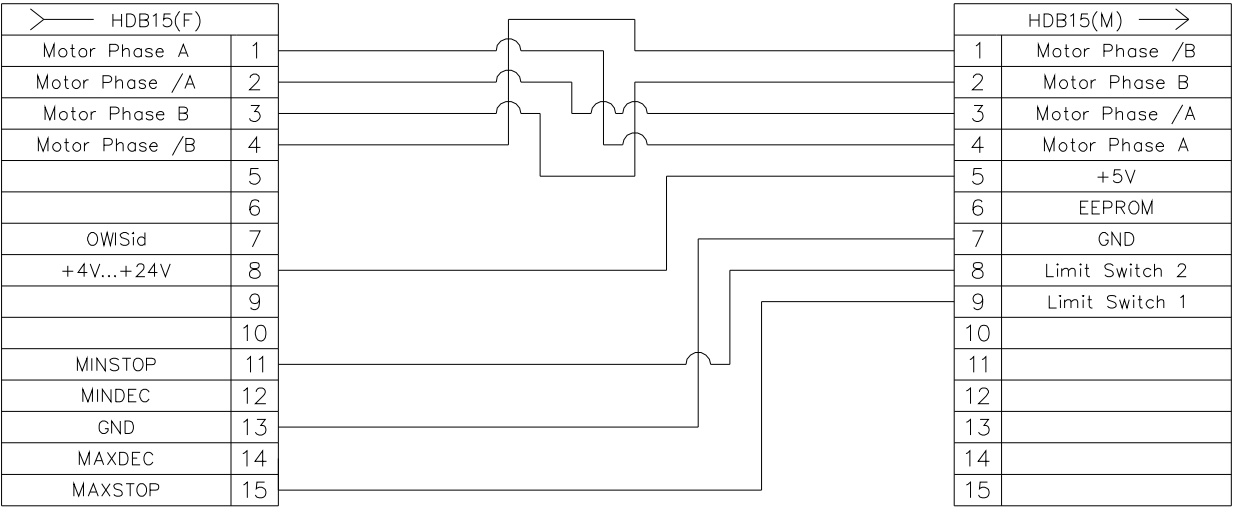


Figure 4. Cable/adapter for OWIS stepper motor stages

KTM 40B-D15-iSM (a), DRTM 40-D25-HSM (c/a), DRTM 65-XXX-HSM (c/a), DRTM 90-D53-HiSM (c/a), DMT 40-D20-HiSM (a), DMT 65-DXX-HSM (c/a), DMT 100-D53-HSM (c/a), DMT 130N-D56-HSM (c/a), DMT 200N-XXX-XiSM (c/a).

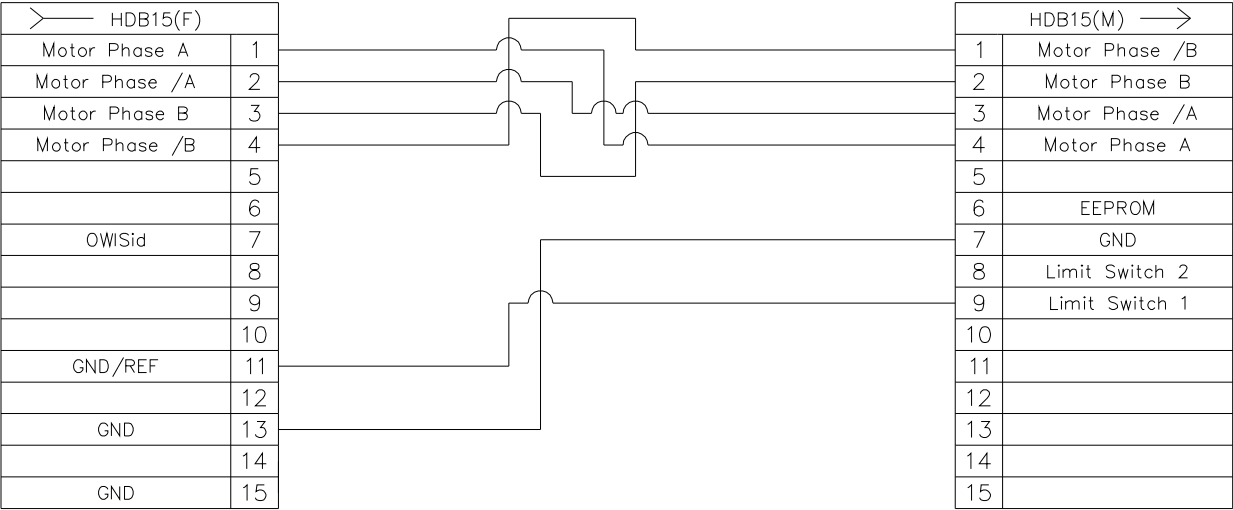


Figure 5. Cable/dapter for OWIC stepper motor stages

LIMES 84N-XXX-XiSM (c/a), LIMES 124N-XXX-XiSM (c/a), HVM 100N-30-XiSM (c/a), MOGO 65-40-65-XiSM (a), MOGO 150-20-XXX-XiSM (c/a), TPM 150-20-20-243-XiSM (c/a).

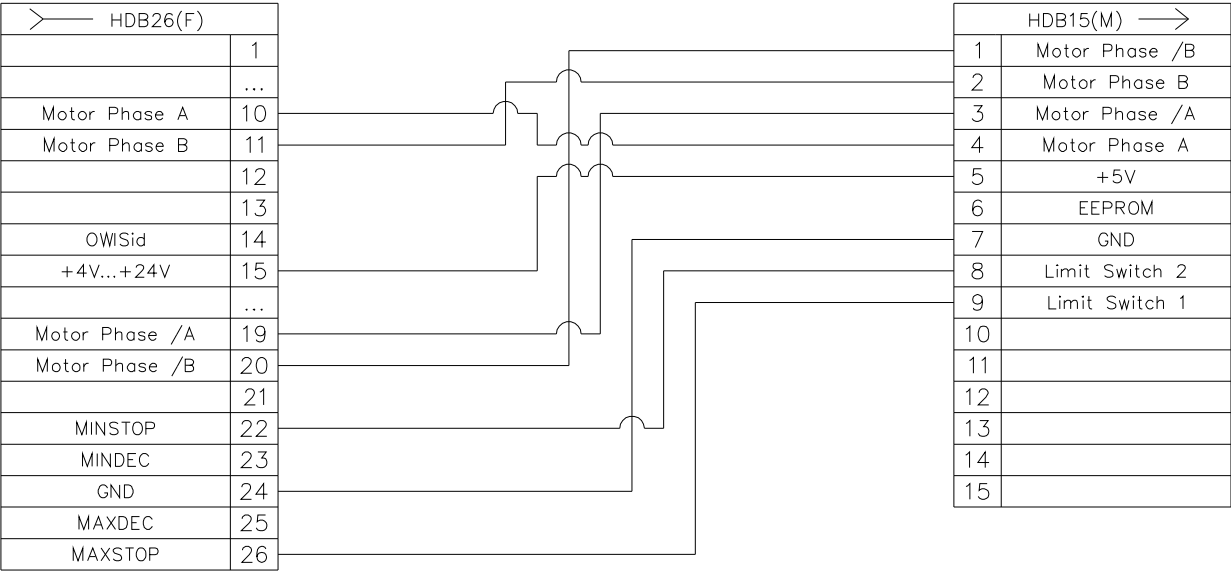


Figure 6. Cable/adapter for OWIC stepper motor stages

LIMES 124N-XXX-XiSM-IMS (c/a), LIMES 170-X00-HiSM-IMS (c/a).

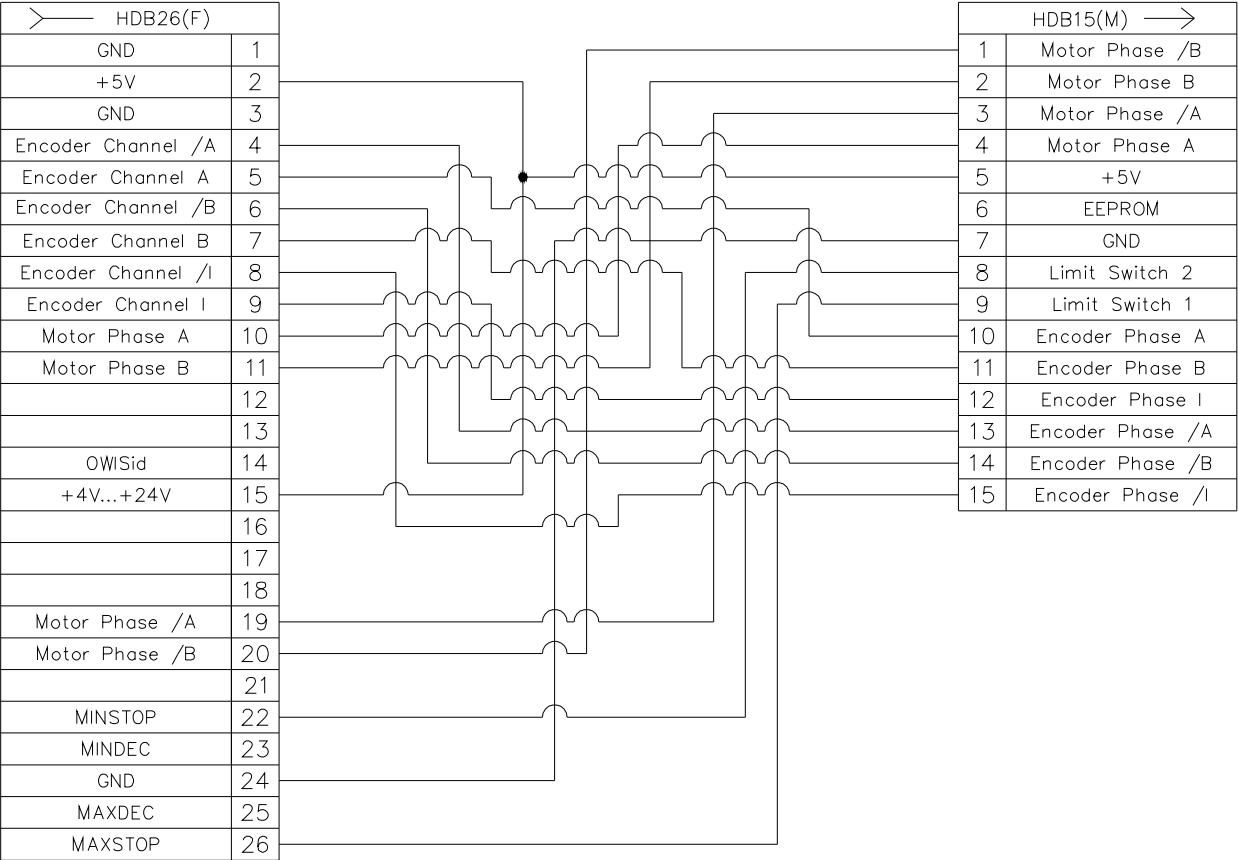


Figure 7. Cable/adaptor for OWIC stepper motor stages with encoder

HUMES XXX-30-XiSM-IMS (c/a), HUMES 60-12-XiSM-IMS (c/a).

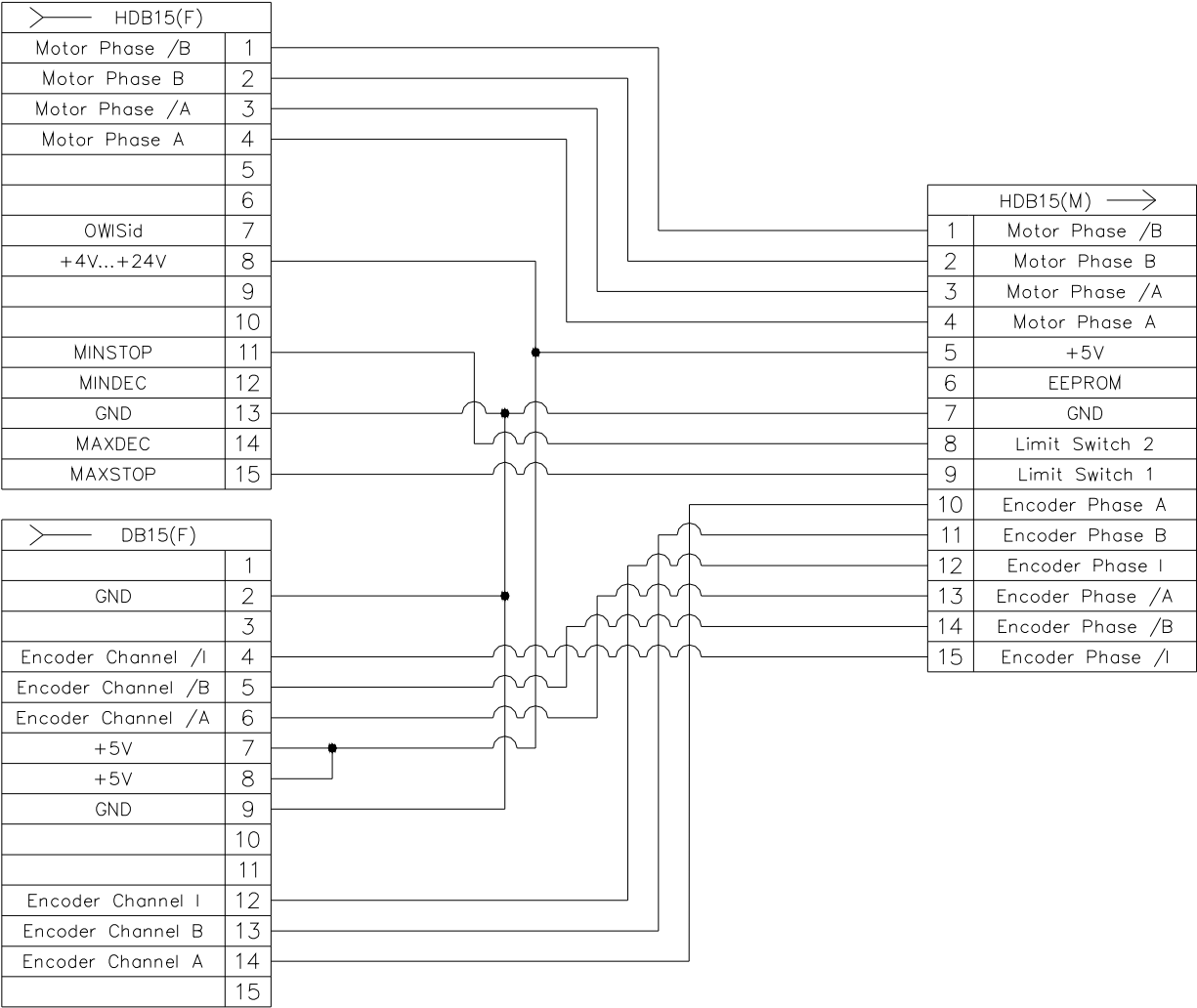


Figure 8. Cable/adaptor for OWIC stepper motor stages

Motorized stages based on BLDC motors:

HPL 120-XX0-HLM (c/a).

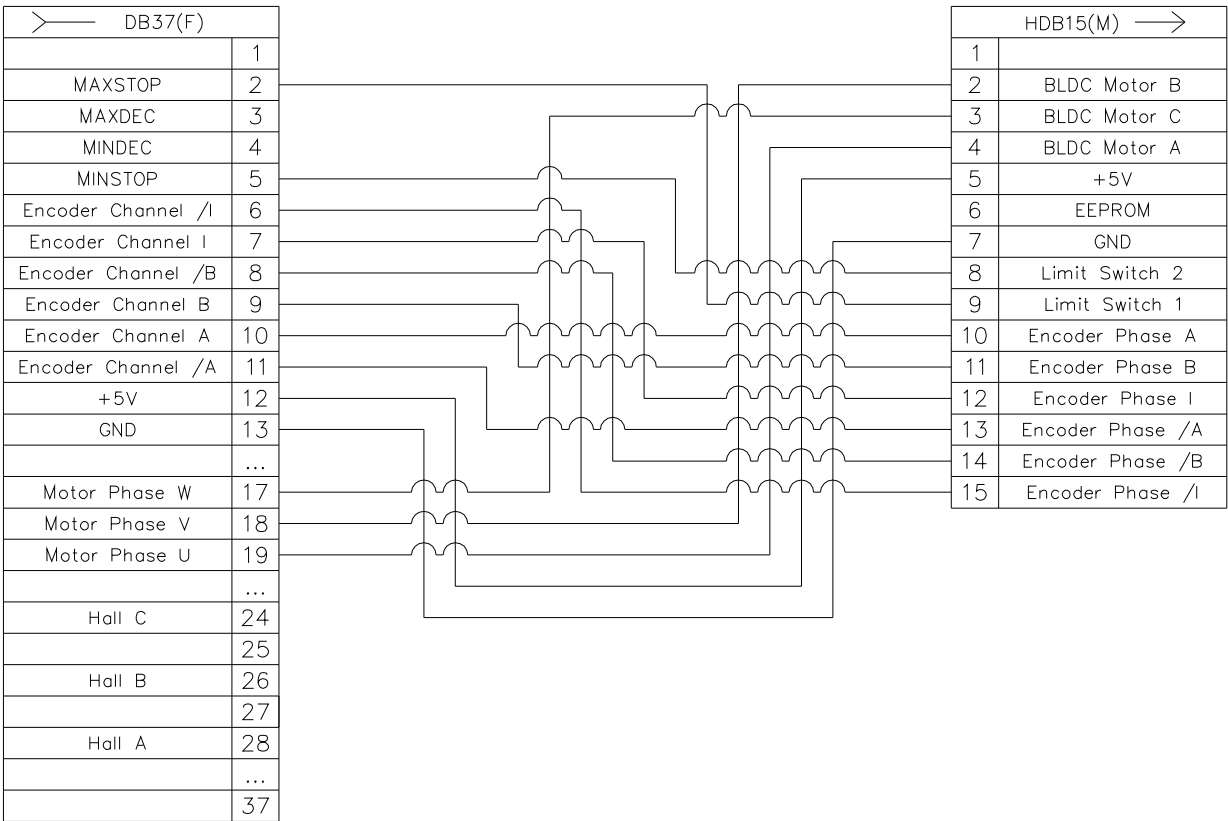


Figure 9. Cable/adaptor for OWIS BLDC motor stages